

ECMWF-WWRP/THORPEX

Polar Prediction Workshop



24 - 27 June 2013



Interest in the polar regions continues to grow due to the opportunities and risks that come along with polar climate change

Expansion of human activities in polar regions are leading to more demands for sustained, improved, and integrated observational and predictive weather, climate and water information in support of decision making. Meeting the demand for such services will require the resolution of important knowledge gaps in polar regions across weather, sub-seasonal and seasonal forecasting scales, and all latitudes.

In order to meet growing demand for skilful predictions in polar regions and beyond the following key research areas will be addressed during the workshop

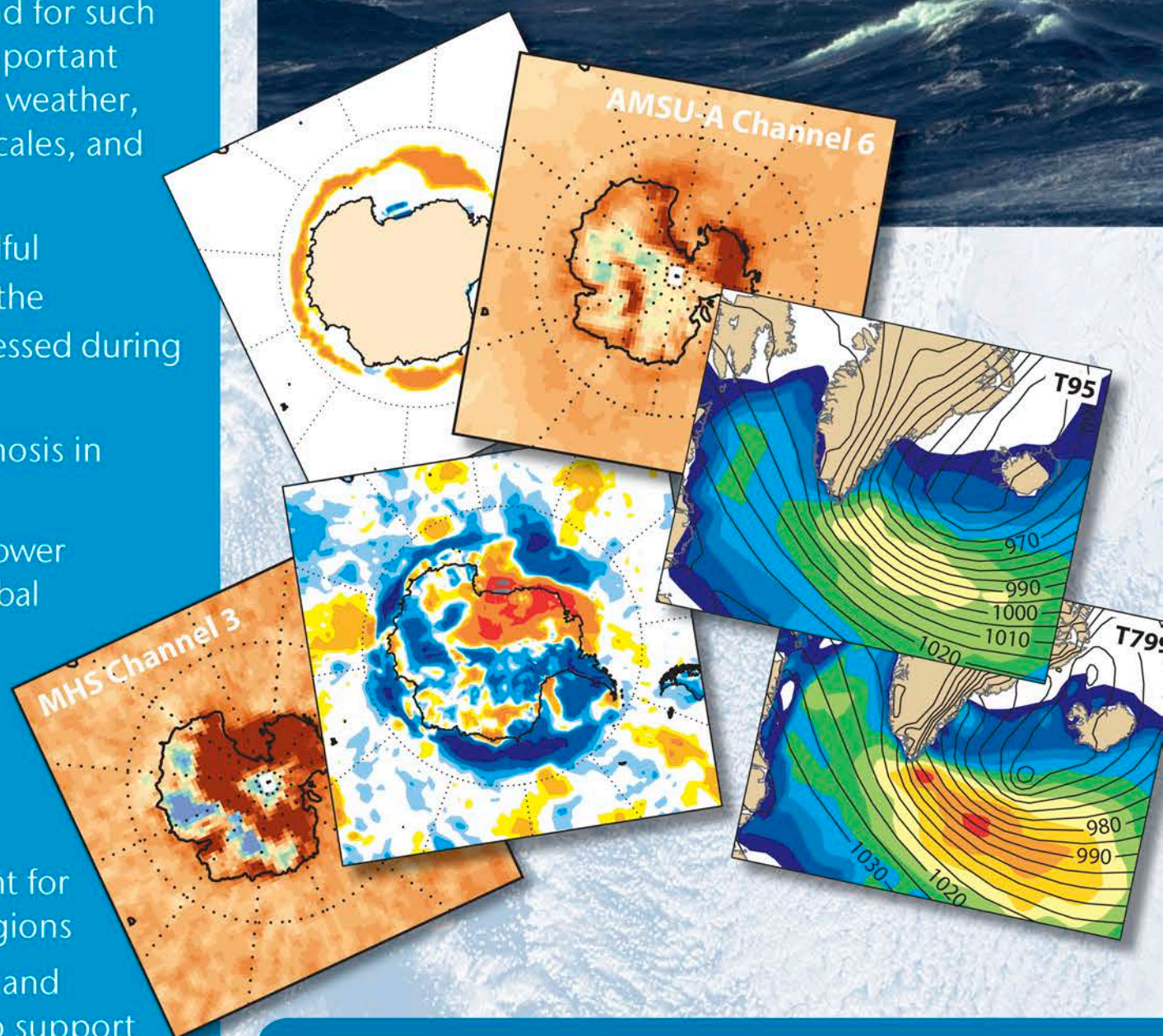
- Predictability and forecast error diagnosis in polar regions
- Two-way linkages between polar and lower latitudes, and their implications for global prediction
- Representation of polar key processes in (coupled) models of the atmosphere, land, ocean and cryosphere
- Data assimilation systems that account for the unique characteristics of polar regions
- Optimizing polar observing systems, and coordinate additional observations to support modelling and verification

Attendance

The workshop is not part of our training programme

Attendance is by invitation only.

If you are working in this area and would like to participate please contact us.



Useful information on ECMWF web site

<http://www.ecmwf.int/about/location/>

<http://www.ecmwf.int/newsevents/meetings/>

Contact

Workshop organizer

Dr Peter Bauer (ECMWF)

Administrative assistance for the workshop is provided by
Els Kooij-Connally (els.kooij@ecmwf.int)